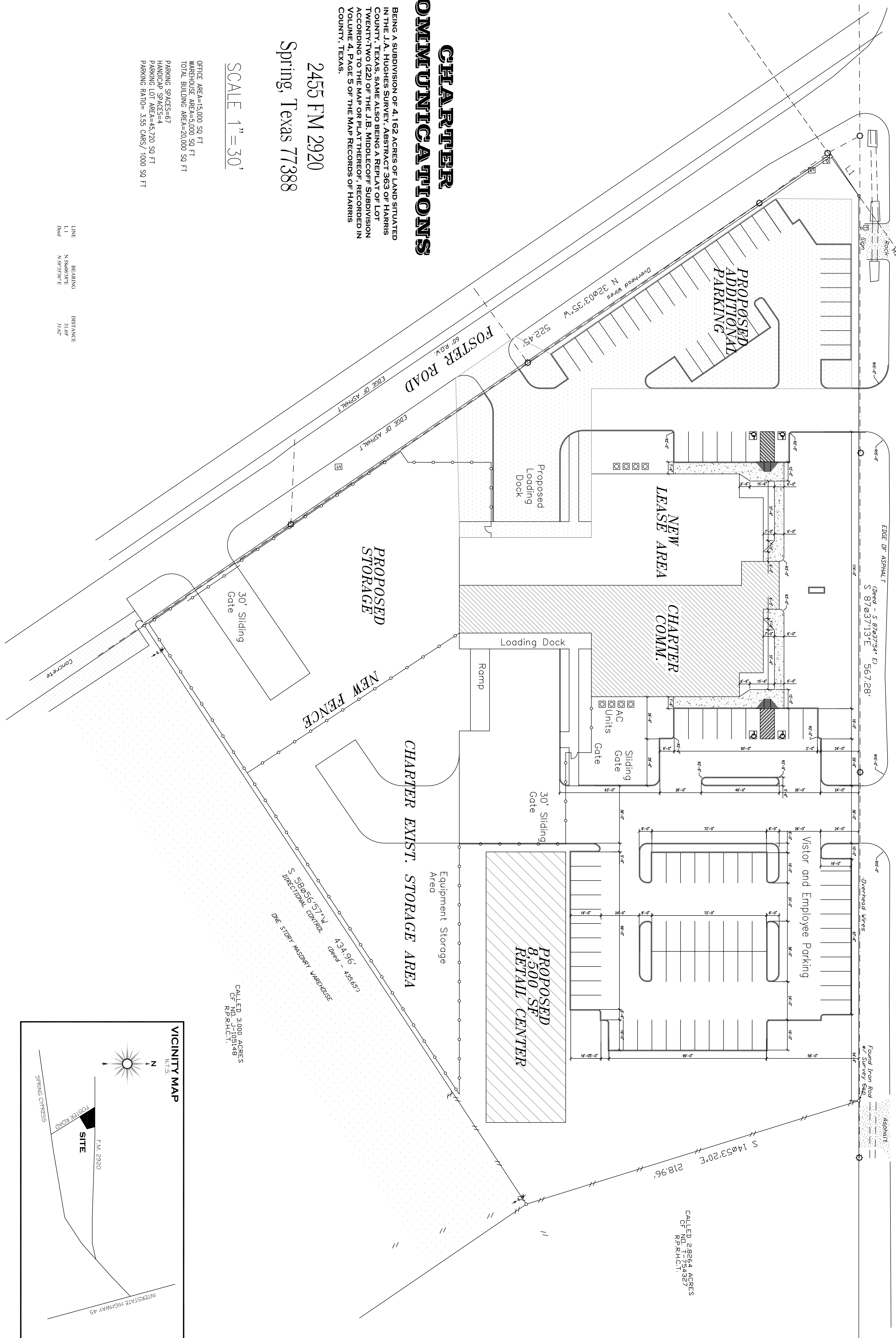


F.M. HIGHWAY 2920
120' R.D.W.



CHARTER COMMUNICATIONS

BEING A SUBDIVISION OF 4.162 ACRES OF LAND SITUATED IN THE J.A. HUGHES SURVEY, ABSTRACT 363 OF HARRIS COUNTY, TEXAS, SAME ALSO BEING A REPLAT OF LOT TWENTY-TWO (22) OF THE J.B. MIDDLECOFF SUBDIVISION ACCORDING TO THE MAP OR PLAT THEREOF, RECORDED IN VOLUME 4, PAGE 5 OF THE MAP RECORDS OF HARRIS COUNTY, TEXAS.

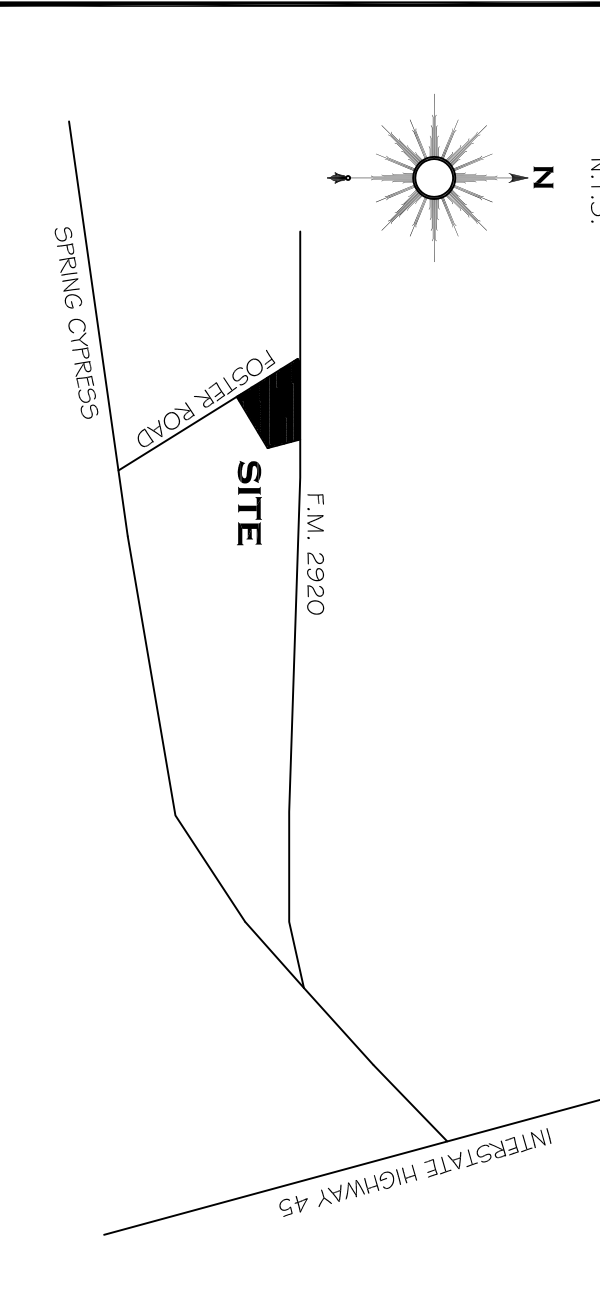
2455 FM 2920
Spring, Texas 77388

SCALE 1" = 30'

OFFICE AREA=15,000 SQ. FT.
WAREHOUSE AREA=5,000 SQ. FT.
TOTAL BUILDING AREA=20,000 SQ. FT.
PARKING SPACES=67
HANDICAP SPACES=4
PARKING LOT AREA=45,720 SQ. FT.
PARKING RATIO= 3.55 CARS/1000 SQ. FT.

LINE	BEARING	DISTANCE
L1	N 59°55'57" E	31.00'
L2	N 59°55'57" E	31.00'

VICINITY MAP



CALL ED 3100' AGRES
OF REPR.H.C.T.

CALL ED 2824' AGRES
OF REPR.H.C.T.

Charter Communications
Spring
Harris

REVISION	DATE	BY	APP'D
1	10-12-2000		
2			
3			
4			
5			
6			
7			
8			
9			

NOTE:
Drawings, specifications, and documents, including those in electronic form, prepared by Infinity Texas Development Inc. are instruments of service for use solely with respect to the project. The engineer shall be deemed the author and owners of their respective instrument of service and shall retain all common law, statutory and other reserved rights, including copyrights.

DEVELOPMENT INC.
25003 Pitkin Road Suite C-100 The Woodlands, Tx 77386
Office# 281-296-9199 Fax# 281-296-0577

PROJECT NUMBER	00-1011
DATE	10-27-2000
SCALE	1"=30'
SHEET NUMBER	A1-1