



RAYFORD ROAD (100' R.O.W.)

27.97'
N84-50'18"E

397.06' N02-20'11"W
299.09' N84-50'18"E

130.67'
S01-14'51"E

382.38' S-01-39'12"E

373.95' N01-00'49"W

110.80'
N01-06'24"W

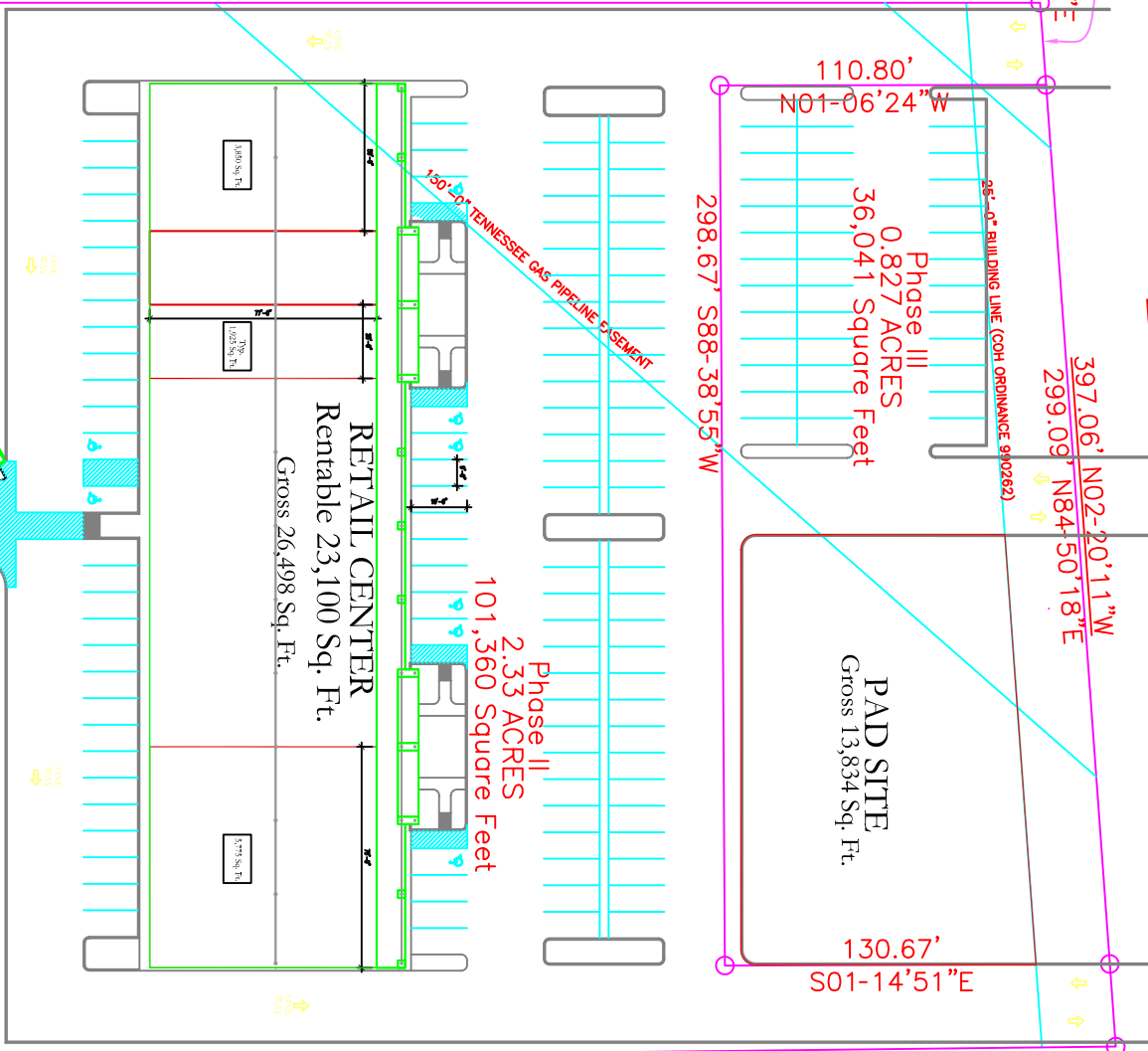
298.67' S88-38'55"W

PAD SITE
Gross 13,834 Sq. Ft.

Phase III
0.827 ACRES
36,041 Square Feet

Phase II
2.33 ACRES
101,360 Square Feet

RETAIL CENTER
Rentable 23,100 Sq. Ft.
Gross 26,498 Sq. Ft.



343.72' S88-37'16"W

21.16'
S43-29'02"W

MONTGOMERY COUNTY DRAINAGE DITCH NO. 8

Project By:
Industry Texas
Development Inc.
200 Valbywood, #100
The Woodlands, TX 77380
Tel: 281.336.0070
Fax: 281.336.0077
mailto:info@industrytx.com



Rayford Ridge Retail Phase II & II (PAD SITE)
434 Rayford Road
Spring, Texas 77386

Revisions:

Date	11-30-2006
Scale	None
Project Number	040123

A1