



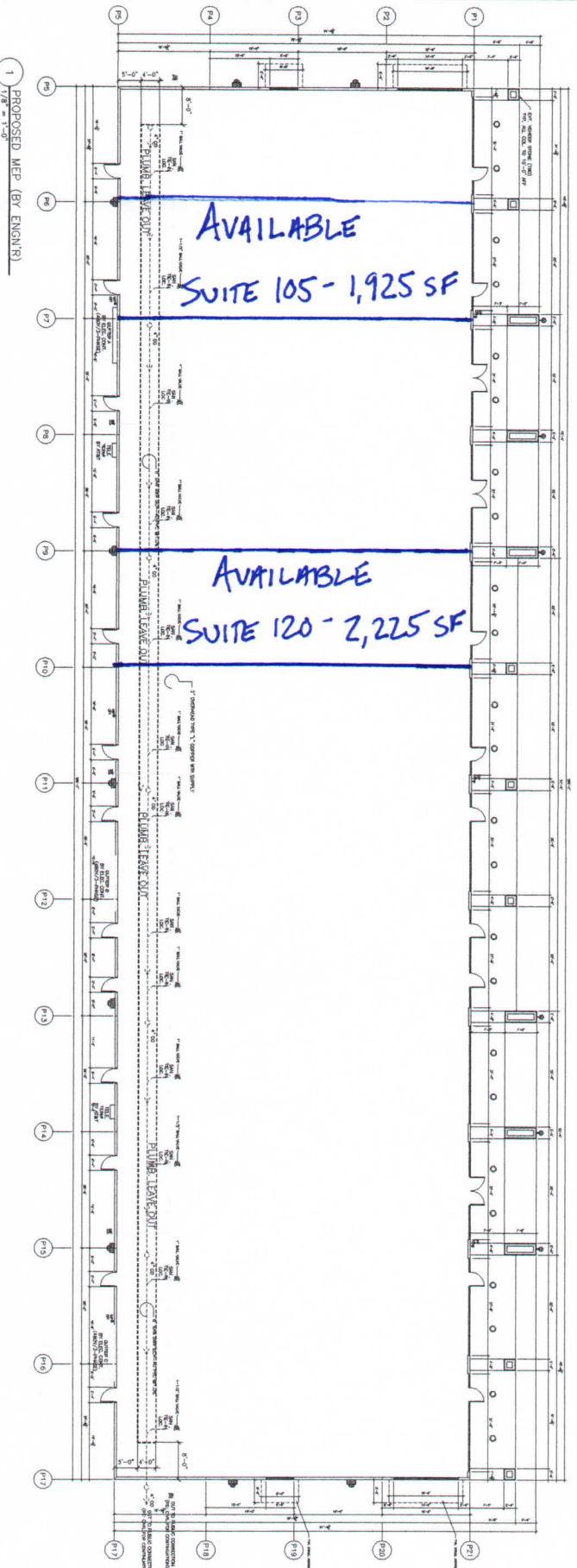
Project By:
**Infinity Lexos
 Development Inc.**
 200 Valleywood A400
 The Woodlands, Texas 77380
 Fax: (281) 296-5577
 info@infinitylexosdevelopment.com

Rayford Ridge Retail II

Revision:

Date	04-29-07
Scale	1/8" = 1'-0"
Project Number	031210

A2.0



ELEC. CONTRACTOR TO SUPPLY: SERVICE TO BE 480V/3-PHASE

- (1) ELEC. 3" EMT OVERHEAD CONDUIT FROM GUTTERS W/ PULL STRING TO EA. SUITE LOC. BY G.C. (MARKED)
- (1) TELE. 1" EMT OVERHEAD CONDUIT W/ PULL STRING TO OEA. SUITE LOC. BY G.C. (MARKED)
- (3) TIMERS POLE LIGHTS, BUILDING LIGHTS, AND ACCENT LIGHTS
- (1) EXT. 1900 BOX CENTERED ABOVE EA. SUITE FOR FUTURE SIGN. LOC. BY G.C. CONDUIT TO BACK WALL TYP. (NOTE BLOCKING TO BE ADDED AT SIGNAGE LOC. BY ELEC. CONT. PER G.C. SPECS.)
- 200 AMP (OR LARGER, DETER. BY ELEC. CONTRACTOR) HOUSE POWER SERVICE
- (2) EXT. WALL MOUNT LIGHTS. FINAL LOC. BY G.C.
- (24) EXT. 8" CAN LIGHTS INSTALLED AT STUCCO CLG. FINAL LOC. BY G.C.
- (6) UP/DOWN WALL MOUNT LIGHTS AT FRONT. FINAL LOC. BY G.C.
- (6) EXT. POLE LIGHTS PER SITE PLAN
- (3) NEMA TYP. GUTTERS SIZING BY ELEC. CONT.
- (2) NEMA TYP. GUTTERS ABOVE ALL TELE. TERMINALS FOR FUTURE SERVICE
- (2) 4" PVC UNDERGROUND CONDUIT FROM R.O.W. TO TELE. TERMINALS
- ALL PVC UNDERGROUND CONDUIT TO MAKE ELEC. SERVICE READY FOR INSTALLATION

PLUMB. CONTRACTOR TO SUPPLY:

- (2) HOSEBIBS AT SOUTH WALL. (1) HOSE BIB AT WEST WALL. (2) HOSEBIBS AT NORTH WALL, AND ENTRY AT EAST WALL
- (3) LOOPS FOR FUTURE GREASE TRAPS PER CIVIL DRAW., G.C. TO LOCATE
- (1) BALL VALVE AT EA. SUITE LOC. BY G.C.
- (1) SAN. TIE-IN @ EA. SUITE LOC. BY G.C.
- NO EXT. PENETRATIONS TO BE MADE WITHOUT CONSENT OF G.C.
- RP7 BACKFLOW PREVENTORS FOR DOMESTIC. INSTALLED PER CODE
- ROOFING CONTRACTOR TO SUPPLY:
- ALL 2" VENTS PER PLANS
- PVC MEMBRANE TO WRAP AROUND PARAPHET WALL (ALL LOC.)
- 12" SOFFIT PANELS @ AWNING
- R-PANEL AT TOP OF ALL AWNINGS FOR DRAIN.
- DOWNSPOUTS PER PLANS AT AWNINGS AND BACK OF BLDG.
- ALL BUILD-UP LOC. PER PLANS AND CONT.
- 2-PIECE TRIM CAP AT TOP OF PARAPHETS
- ALTERANIE SOFFIT PANELS AT FRONT CLG. IN LUE OF STUCCO ROUGH-IN (4) FUT. REAT. TYP. EX. VENTS. LOC. BY G.C.
- HVAC. CONTRACTOR TO SUPPLY:
- UNITS TO BE RTU TYP. AND 480V/3-PHASE W/ 15 KW HEAT STRIP
- CURBS SIZED FOR 6 TONS & ABV. (CARRIER 507M WEATHERMAKERS)
- PENETRATIONS AT UNIT TO BE MADE IN HIGH SPOT AND WITH ACCORDANCE TO IND. STAND.
- MANUF. GASKETD SEAL AT TAP TO ALL UNITS